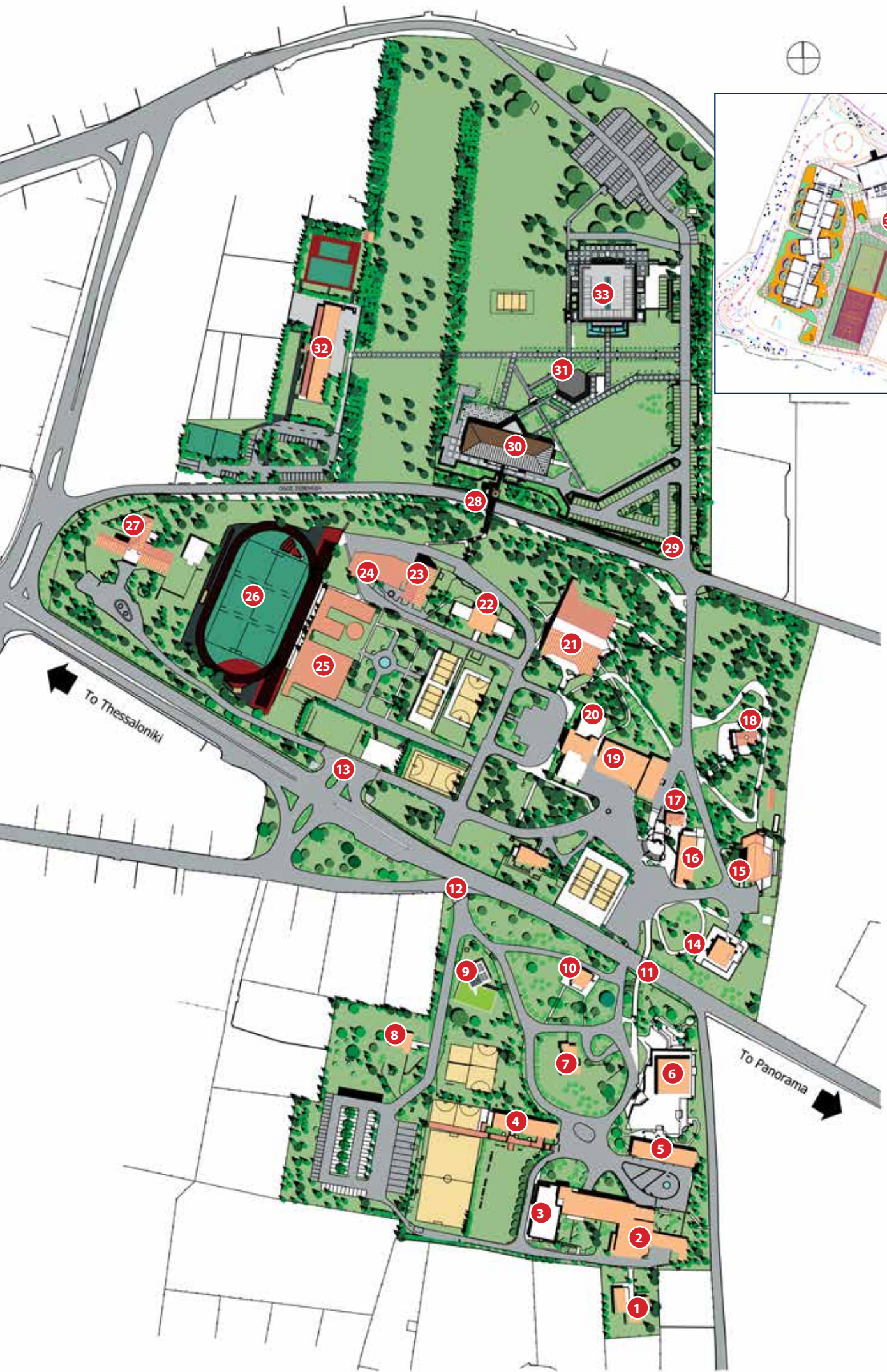




**Anatolia College Campus Map**





1. STAFF RESIDENCES
2. INGLE HALL: Boarding Department • Dining Room • Gymnasium Labs
3. INGLE HALL ANNEX: Gymnasium Classrooms • Bridge Bilingual (Junior Levels)
4. RIGGS HALL: Gymnasium Classrooms • Bridge Bilingual (Senior Levels)
5. WHITE HALL: Gymnasium Classrooms
6. ELEFThERiADiS LiBRARY
7. WHITE HOUSE: Student Services Office • US College Counseling Office • Bridge Bilingual Office  
Doctor's Office • Counseling & Career Guidance Office
8. CHAPMAN HOUSE
9. ANNA PAPAgeoRgiOU STEM CENTER
10. ANATOLIA KINDERGARTEN (WILLARD HOUSE) • Bridge Bilingual PreK/K Classes
11. PEDESTRIAN TUNNEL
12. SOUTH CAMPUS ENTRANCE – Gymnasium Gatehouse
13. MAIN CAMPUS ENTRANCE – Lyceum Gatehouse • Pinewood Elementary School Gatehouse
14. MORLEY HOUSE: Anatolia College Alumni Association
15. RAPHAEL HALL: Performing Arts Center
16. PAPPAS HALL: Theater
17. MUSIC ROOM • Lyceum Canteen
18. CHURCH
19. KYRIDES HALL: Lyceum Sciences Building (STEM Innovation Isle, Laboratories) • Lyceum Classrooms
20. MACEDONIA HALL: Lyceum Classrooms • Center for Talented Youth office (CTY) • ATM
21. GYM
22. STEPHENS HALL: Administrative Services • MSU Testing Office • Cashier
23. COMPTON HALL: International Baccalaureate Building (IBDP)
24. KASSANDRA CENTER FOR EDUCATIONAL EXCELLENCE / IBDP
25. PINEWOOD AMERICAN INTERNATIONAL SCHOOL
26. ANATOLIA ALUMNI SOCCER & TRACK FIELD
27. PINEWOOD ELEMENTARY SCHOOL
28. PEDESTRIAN OVERPASS
29. NORTH CAMPUS ENTRANCE – ACT GATEHOUSE
30. ACT STAVROS CONSTANTINIDIS HALL: ACT Classrooms • Laboratories • Administrative Services
31. ACT OPEN AMPHITHEATER
32. ACT WEST WING
33. BISSELL LIBRARY – The Stavros S.Niarchos Technology Center
34. ANATOLIA ELEMENTARY SCHOOL

### *Αλφαβητικό ευρετήριο εγκαταστάσεων*

---

ACT Classrooms **29, 31, 32**  
 ACT Gatehouse **28**  
 ACT Open Amphitheater **30**  
 ACT Stavros Constantinidis Hall **29**  
 ACT West Wing **31**  
 Administrative Services **22**  
 Anatolia Alumni Soccer & Track Field **25**  
 Anatolia College Alumni Association **14**  
 Anatolia Elementary School  
 Anatolia Kindergarten (Willard House) **10**  
 Anna Papageorgiou Stem Center **9**  
 ATM **20**

Bissell Library **32**  
 Boarding Department **2**  
 Bridge Bilingual (Junior Levels) **3**  
 Bridge Bilingual (Senior Levels) **4**  
 Bridge Bilingual Office **7**  
 Bridge Bilingual PreK/K Classes **10**

Cashier **22**  
 Center For Talented Youth Office (CTY) **20**  
 Chapman House **8**  
 Church **18**  
 Compton Hall **23**  
 Counseling & Career Guidance Office **7**  
 Dining Room **2**  
 Doctor's Office **7**  
 Dorms **2**

Eleftheriadis Library **6**

Gym **21**  
 Gymnasium Classrooms - Ingle Hall Annex **4**  
 Gymnasium Classrooms - Riggs Hall **4**  
 Gymnasium Classrooms - White Hall **5**  
 Gymnasium Gatehouse **12**  
 Gymnasium Labs **2**

IBDP **23, 24**  
 Ingle Hall **2**  
 Ingle Hall Annex **3**

Kassandra Center for Excellence **24**  
 Kyrides Hall **19**

Laboratories (ACT) **29**  
 Laboratories (Lyceum) **19**  
 Lyceum Canteen **17**  
 Lyceum Classrooms - Kyrides Hall **19**  
 Lyceum Classrooms - Macedonia Hall **20**  
 Lyceum Classrooms - Kyrides Hall **19**  
 Lyceum Gatehouse **13**  
 Lyceum Sciences Building **19**

Macedonia Hall **20**  
 Main Campus Entrance **13**  
 Morley House **14**  
 MSU Testing Office **22**  
 Music Room **17**

North Campus Entrance **28**

Pappas Hall **16**  
 Pedestrian Overpass **27**  
 Pedestrian Tunnel **11**  
 Performing Arts Center **15**  
 Pinewood American International School **25**  
 Pinewood Elementary School **26**  
 Pinewood Elementary School Gatehouse **13**

Raphael Hall **15**  
 Riggs Hall **4**

South Campus Entrance **12**  
 Staff Residences **1**  
 Stem Innovation Isle **19**  
 Stephens Hall **22**  
 Student Services Office **7**

The Stavros S.Niarchos Technology Center **32**  
 Theater **16**

Us College Counseling Office **7**

White Hall **5**  
 White House **7**





©Anatolia College - 100 pcs - April 2024

Anatolia  
College

Λεωφ. Κέννεντυ 60, Πυλαία, Θεσσαλονίκη • Τηλ.: 2310 398.200 • [www.anatolia.edu.gr](http://www.anatolia.edu.gr)